



SICKLE CELL DISEASE

Centers Workshop

Data Gathering Worksheet

Please ask your IT department or point of contact to extract data using ICD-10 codes for individuals living with sickle cell disease.

	Number of unique persons seen/year		
	2020	2021	2022
1. Number of people with SCD seen for any reason , including ED visits, admissions, or clinic	_____	_____	_____

	Number of unique persons seen ED/year		
	2020	2021	2022
2. Number of treat and release ED encounters the individuals above have had in each 12-month period	_____	_____	_____

	Number of unique persons admitted/year		
	2020	2021	2022
3. Number of hospital encounters (admissions) the individuals above have had in each 12-month period	_____	_____	_____

4. See if you can obtain the aggregate data noted below:

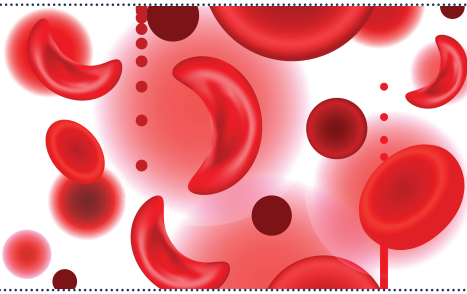
	Number of unique persons average LOS/year		
	2020	2021	2022
Length of stay	_____	_____	_____

	SCD 30-day readmission rate/year		
	2020	2021	2022
30-day readmission rate	_____	_____	_____

Top 10 diagnosis codes used in the readmissions from 2022:

_____	_____
_____	_____
_____	_____
_____	_____
_____	_____

	Number of unique persons seen/year		
	2020	2021	2022
5. How many of the individuals (from question 1) have been seen in the hematology clinic over the same period:	_____	_____	_____



SICKLE CELL DISEASE

Centers Workshop

Data Gathering Worksheet

Current Sickle Cell Disease Center Information

1. How many physicians are currently treating individuals with sickle cell disease in your program?

2. Do you have clinic every day of the week or only certain days?

3. How many advance practice providers (NP or PA) are seeing people with SCD in your program?

4. Do you have a social worker (Y/N) and how many?

5. Do you have a dedicated case manager? (Y/N)

6. Do you have a dedicated nursing team or nurse manager?

7. Do you have a mental health provider? (Y/N and what type?)

8. Do you have infusion/day hospital space for treating acute pain?

