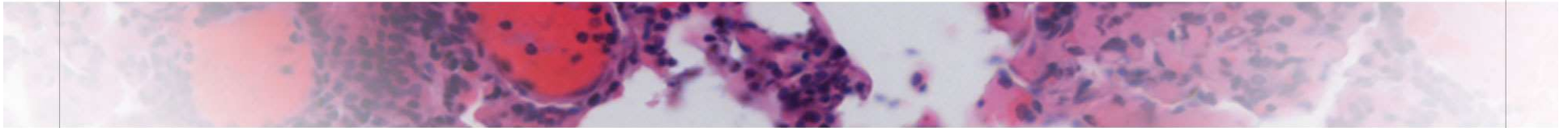




American Society of Hematology
Helping hematologists conquer blood diseases worldwide



Transition Program for Adolescents With Sickle Cell Disease

Allison King, MD, MPH, PhD—Washington University

Fuad El Rassi, MD—Emory University

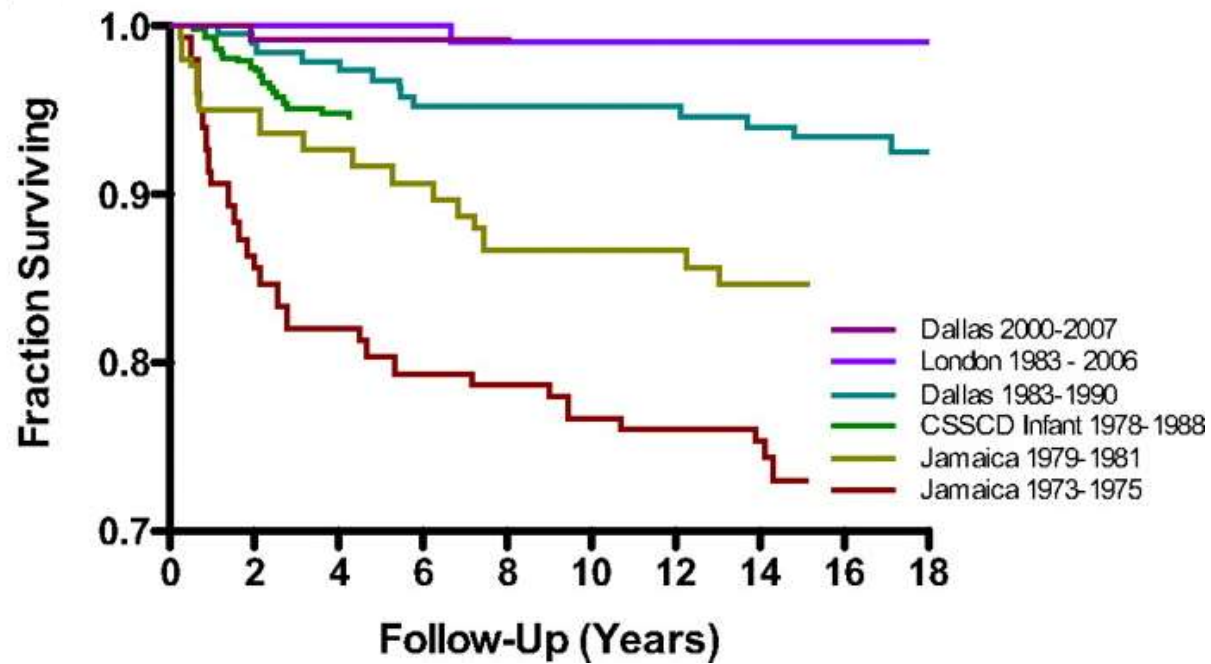
Why Transition?

I feel fine and can take care of myself

I am at college and it is quite busy



Sickle Survival

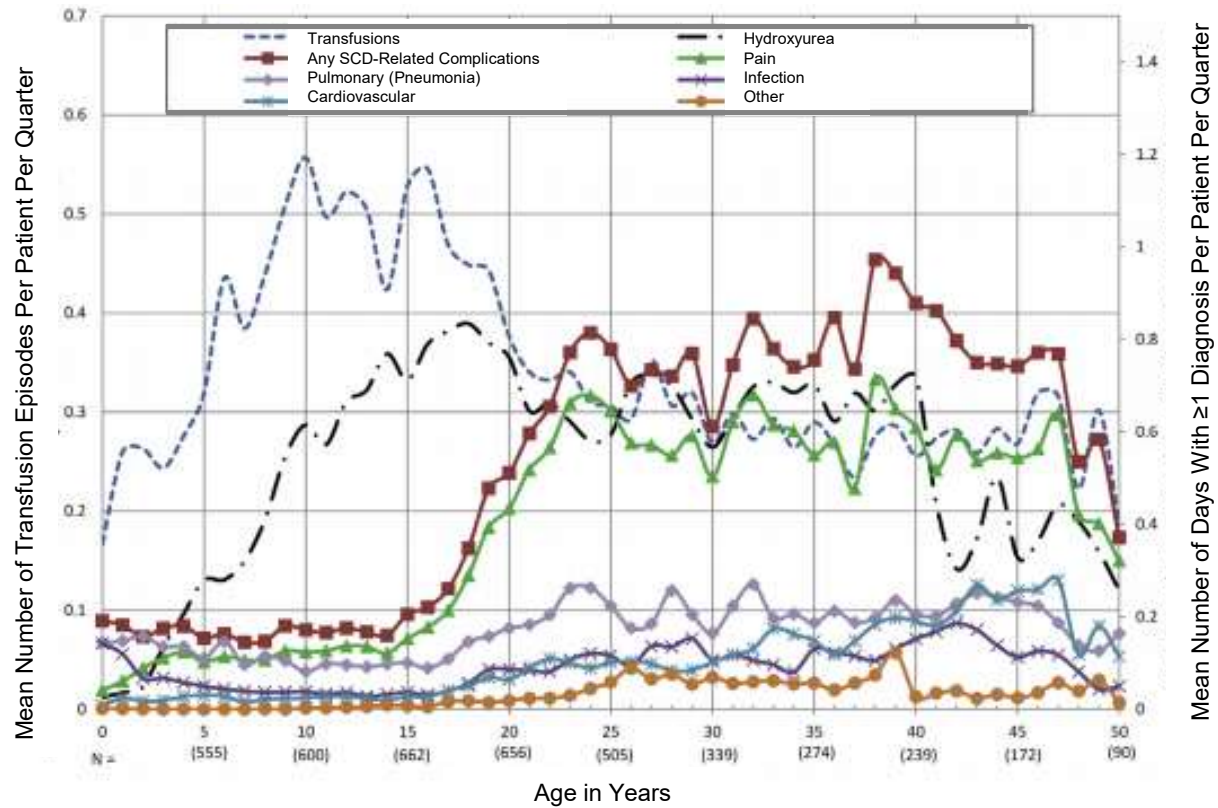


Quinn CT et al. *Blood*. 2010;103:4023-4027.



American Society of Hematology

Age-related Care Patterns in SCD

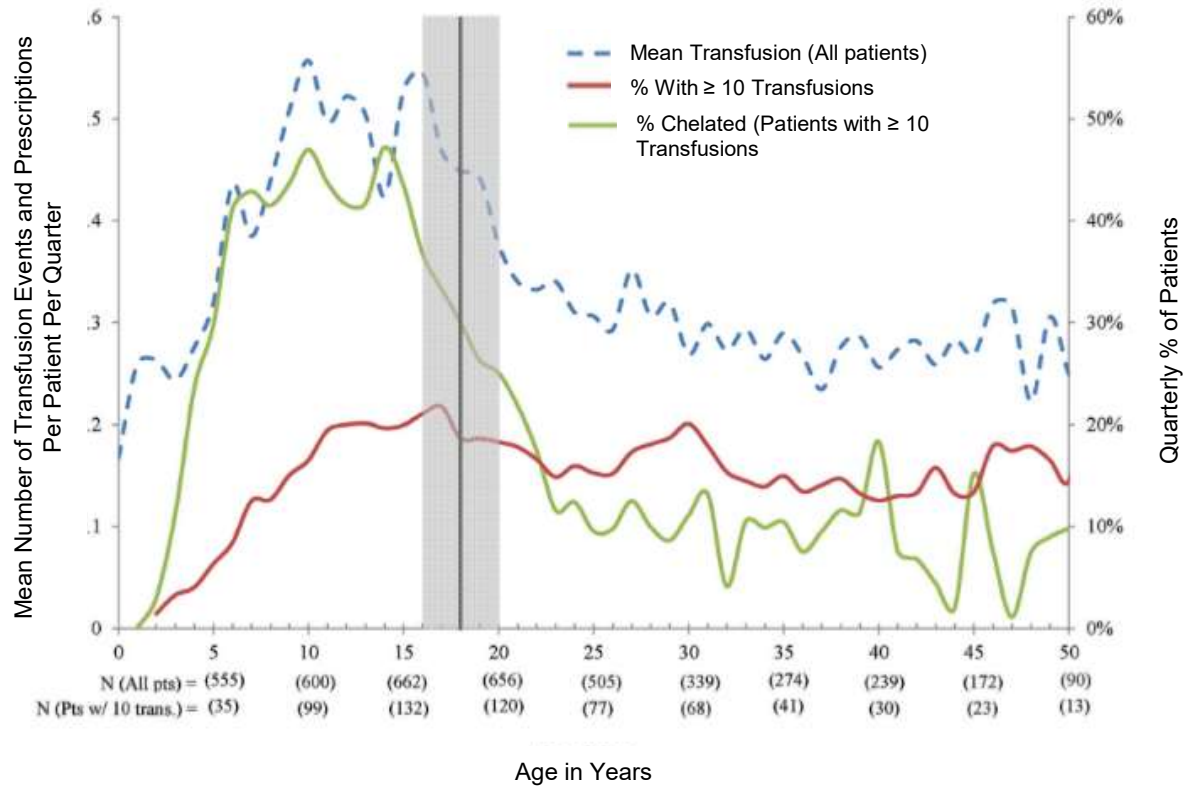


Blinder MA et al. *Pediatric Blood Cancer*. 2013; 60(5):828-835.



American Society of Hematology

Age-related Care Patterns in SCD



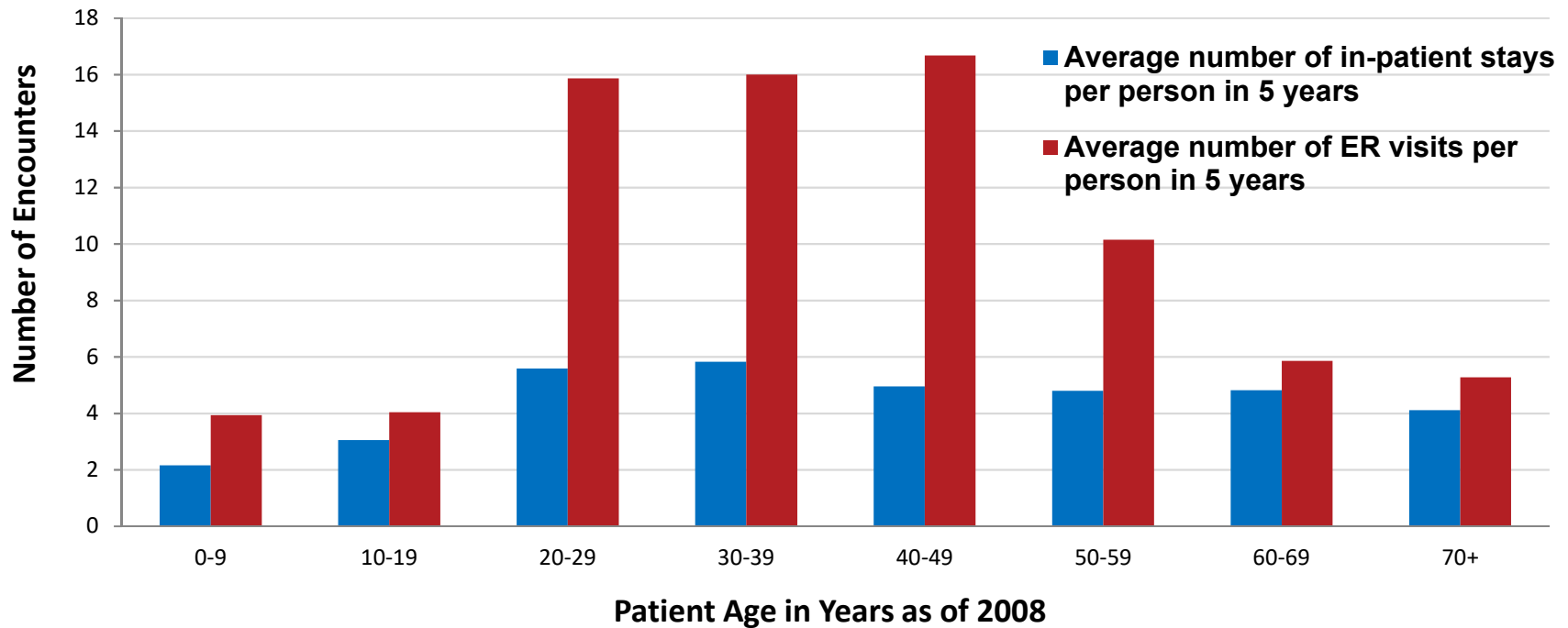
Blinder MA et al. *Pediatric Blood Cancer*. 2013;60(5):828-835.



American Society of Hematology

Georgia RuSH Experience

Average number of hospital encounters from 2004 through 2008 per individual with SCD, by age group in Georgia



Survival Data From Tertiary Clinics

- Kings College Hospital London¹
 - SS/S β^0 Median Age of Death 41
 - Estimated median survival of 67 years
- Duke, UNC, and Grady²
 - SS/S β^0 Median Age of Death 44
 - Estimated median survival of 56 years

1. Gardner K et al. *Blood*. 2016;128(10):1436-1438.

2. Elmariah H et al. *Am J Hematol*. 2014; 89(5):530-535.



Pediatric Clinics

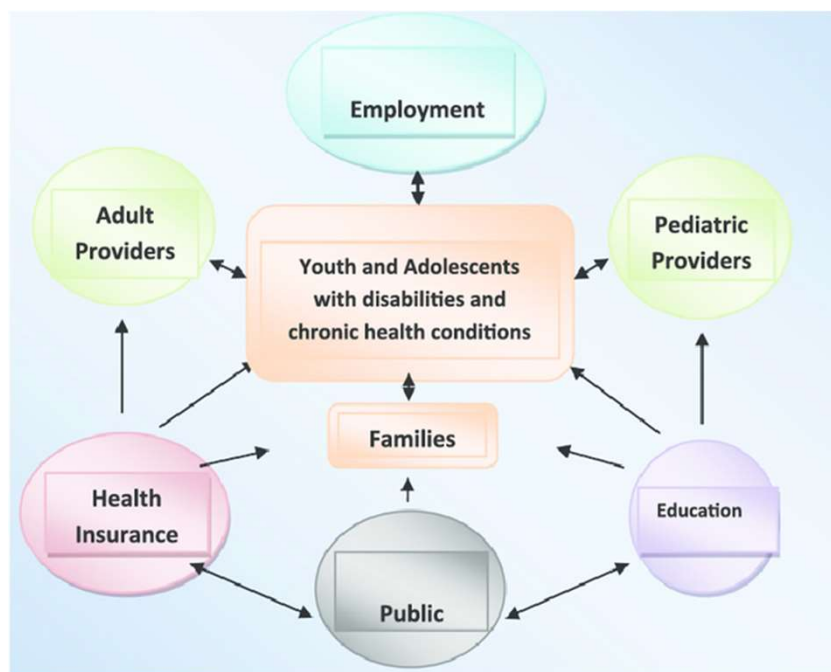
- Multidisciplinary team
- Determine your policy and share early
- Measure knowledge and continue to re-assess skill level
- Introduce options for adult clinics
 - Tours
 - Videos
 - Adult clinic staff visit patient in pediatric clinic
- Review differences in locations and approaches to care
- Summary of history and plans with patients and providers
- Insurance coverage
- Adult providers for primary care, mental health, and specialties
- Chronic transfusion or infusions
 - Schedule
 - Venous access



Transition and Sickle Cell Disease

3 milestones for transition to occur successfully:

- **Medical**
- **Social**
- **Educational**

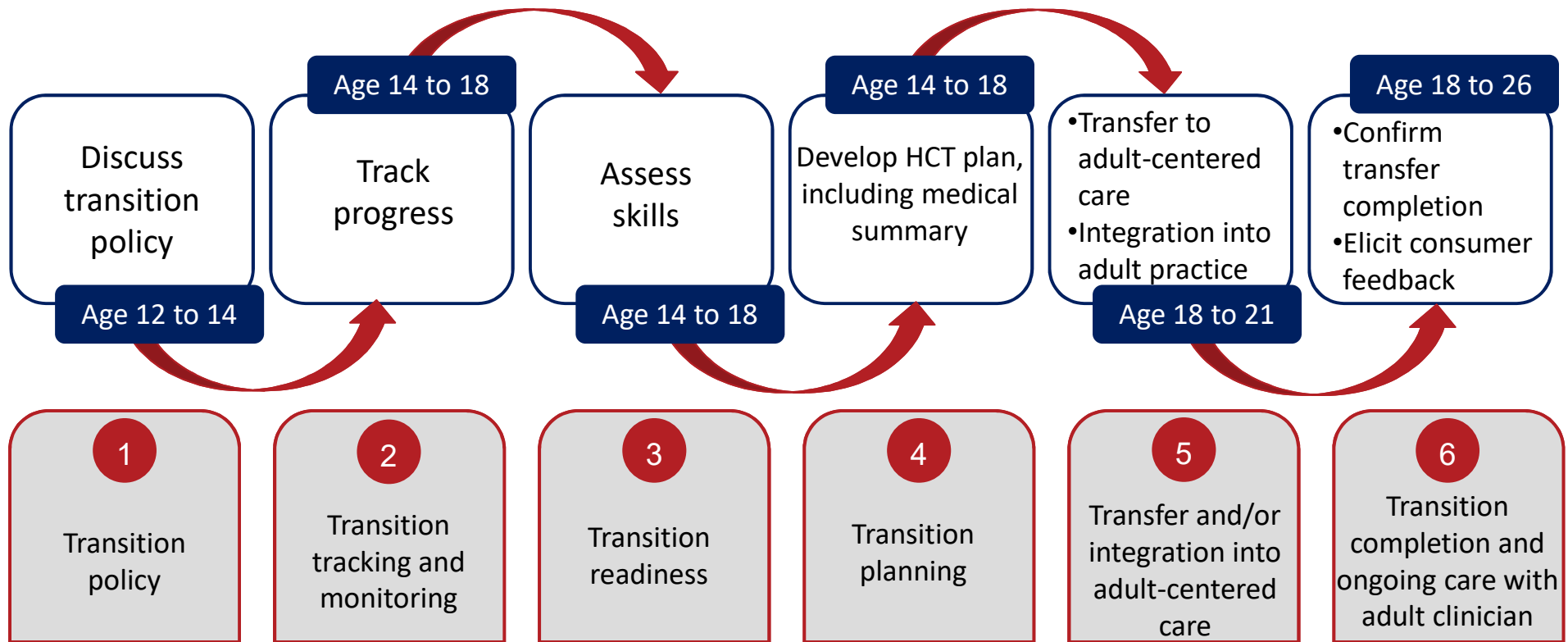


DeBaun MR, Telfair J. *Pediatrics*. 2012;130(5):926-935.



American Society of Hematology

Six Core Elements of Transition



<https://www.gottransition.org/>



American Society of Hematology

Transitioning *From PEDS to ADULTS*

Pediatric-centered

- Nurturing
- Parent centered
- Universal funding
- Family insurance provided
- Paternalistic
- Centralized
- Informed providers

Adult-centered

- Informing
- Patient centered
- Unfunded
- Employment based insurance
- Total autonomy
- Fragmented
- Less informed providers



Questions?



American Society of Hematology