

SICKLE CELL DISEASE

Centers Workshop

Data Gathering Worksheet

1. Ask your IT department/IT person in your division if they can pull the number of people with ICD-10 for sickle cell disease (see list) in the last 3 years seen at your hospital for any reason (2019-2021) including ED visits, admissions, or clinic.

_____ (number of unique persons seen/year in 2019)
_____ (number of unique persons seen/year in 2020)
_____ (number of unique persons seen/year in 2021)

2. Ask them to pull the number of treat and release ER encounters the individuals above have had in each 12-month period (2019-2021)

_____ (number of unique persons seen ED/year in 2019)
_____ (number of unique persons seen ED/year in 2020)
_____ (number of unique persons seen ED/year in 2021)

3. Ask them to pull the number of hospital encounters (admissions) the individuals above have had in each 12-month period (2019-2021)

_____ (number of unique persons seen ED/year in 2019)
_____ (number of unique persons seen ED/year in 2020)
_____ (number of unique persons seen ED/year in 2021)

4. See if you can obtain the aggregate data noted below:

Length of stay:

_____ (number of unique persons average LOS/year in 2019)
_____ (number of unique persons average LOS/ year in 2020)
_____ (number of unique persons average LOS/ year in 2021)

30-day Readmission rate:

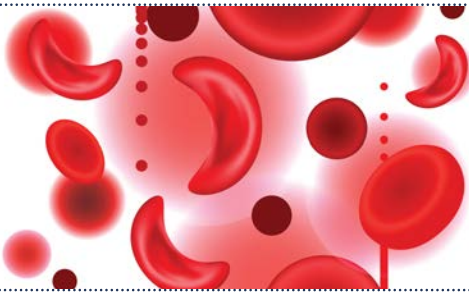
_____ (SCD 30 day readmission rate/year in 2019)
_____ (SCD 30 day readmission rate/year in 2020)
_____ (SCD 30 day readmission rate/year in 2021)

Top 10 diagnosis codes used in the readmissions from 2021:

_____	_____
_____	_____
_____	_____
_____	_____
_____	_____

5. Ask them to see how many of the individuals (from question 1) have been seen in the hematology clinic over the same period:

_____ (number of unique persons seen/year in 2019)
_____ (number of unique persons seen/year in 2020)
_____ (number of unique persons seen/year in 2021)



SICKLE CELL DISEASE

Centers Workshop

Data Gathering Worksheet

Current Sickle Cell Disease Center Information

1. How many physicians are currently treating individuals with sickle cell disease in your program?

2. Do you have clinic every day of the week or only certain days?

3. How many advance practice providers (NP or PA) are seeing people with SCD in your program?

4. Do you have a social worker (Y/N) and how many?

5. Do you have a dedicated case manager? (Y/N)

6. Do you have a dedicated nursing team or nurse manager?

7. Do you have a mental health provider? (Y/N and what type?)

8. Do you have infusion/day hospital space for treating acute pain?

